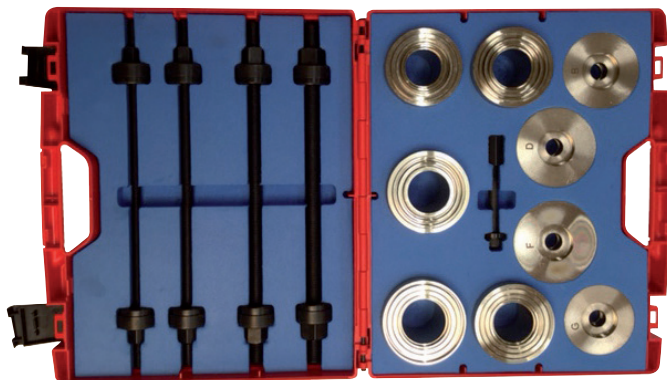
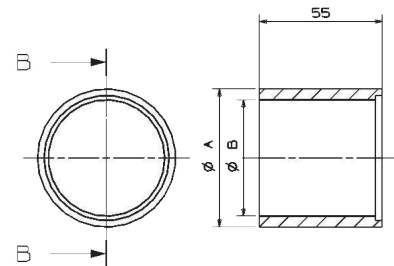


Extractor de Silent-Blocks 5193N

Características



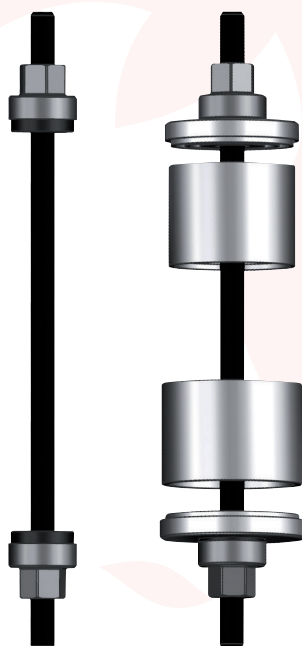
Ref.	Contenido
5193N	4 Husillos con tuercas y rodamientos. 8 Tapas multiples 20 Tubos para montar y desmontar.






Despiece

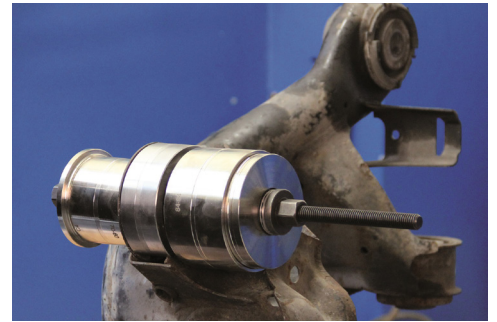
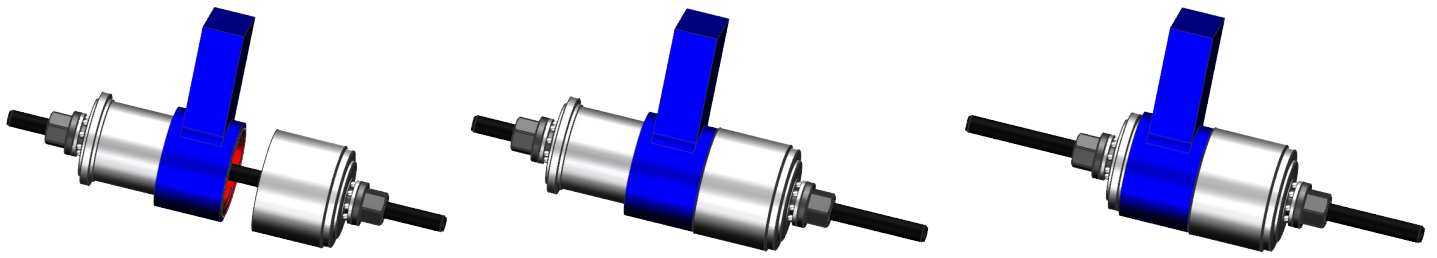
Materiales y acabados

- Husillo Calidad 8,8 (80Kg/mm) Pavonados,
- Tuercas Material C45 templadas a 35HRc pavonadas.
- Tapas Material C45 Estado Natural. Niquelados.
- Tubos Material ST-52 Niquelados.

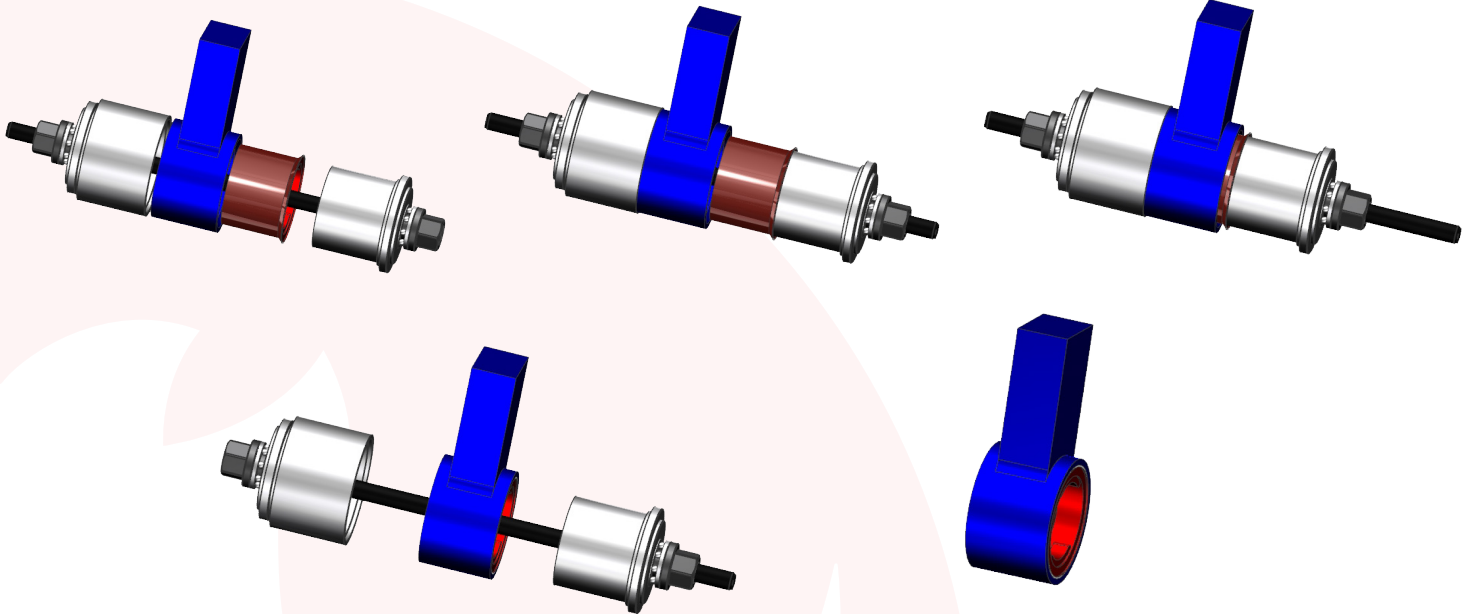


Ref.	Descripción	Para tapa...	
519830		Husillo completo M10	
519831		Husillo completo M12	
519832		Husillo completo M14	
519834		Husillo completo M16	
519041		TAPA A	Ø72
519042		TAPA B	Ø74
519043		TAPA C	Ø76
519044		TAPA D	Ø78
519045		TAPA E	Ø80
519046		TAPA F	Ø82
519047		TAPA G	Ø70
519048		TAPA H	Ø67,6
5190034		Ø Ext 44 Ø Int 34	AC
5190036		Ø Ext 46 Ø Int 36	BD
5190038		Ø Ext 48 Ø Int 38	CE
5190040		Ø Ext 50 Ø Int 40	DF
5190042		Ø Ext 52 Ø Int 42	EH
5190044		Ø Ext 54 Ø Int 44	FG
5190046		Ø Ext 53 Ø Int 46	AH
5190048		Ø Ext 58 Ø Int 48	BG
5190050		Ø Ext 60 Ø Int 50	AC
5190052		Ø Ext 62 Ø Int 52	BD
5190054		Ø Ext 64 Ø Int 54	CE
5190056		Ø Ext 66 Ø Int 56	DF
5190058		Ø Ext 68 Ø Int 58	EH
5190060		Ø Ext 70 Ø Int 60	FG
5190062		Ø Ext 72 Ø Int 62	AH
5190064		Ø Ext 74 Ø Int 64	BG
5190066		Ø Ext 76 Ø Int 66	AC
5190068		Ø Ext 78 Ø Int 68	BD
5190070		Ø Ext 80 Ø Int 70	CE
5190072		Ø Ext 82 Ø Int 72	DF

Desmontar un silent-Block



Montar un Silent-Block



Instrucciones de uso



1- Mantenga las normas de higiene y seguridad en el trabajo.

2- Utilice todos los equipos de protección individual (EPIs) necesarios.